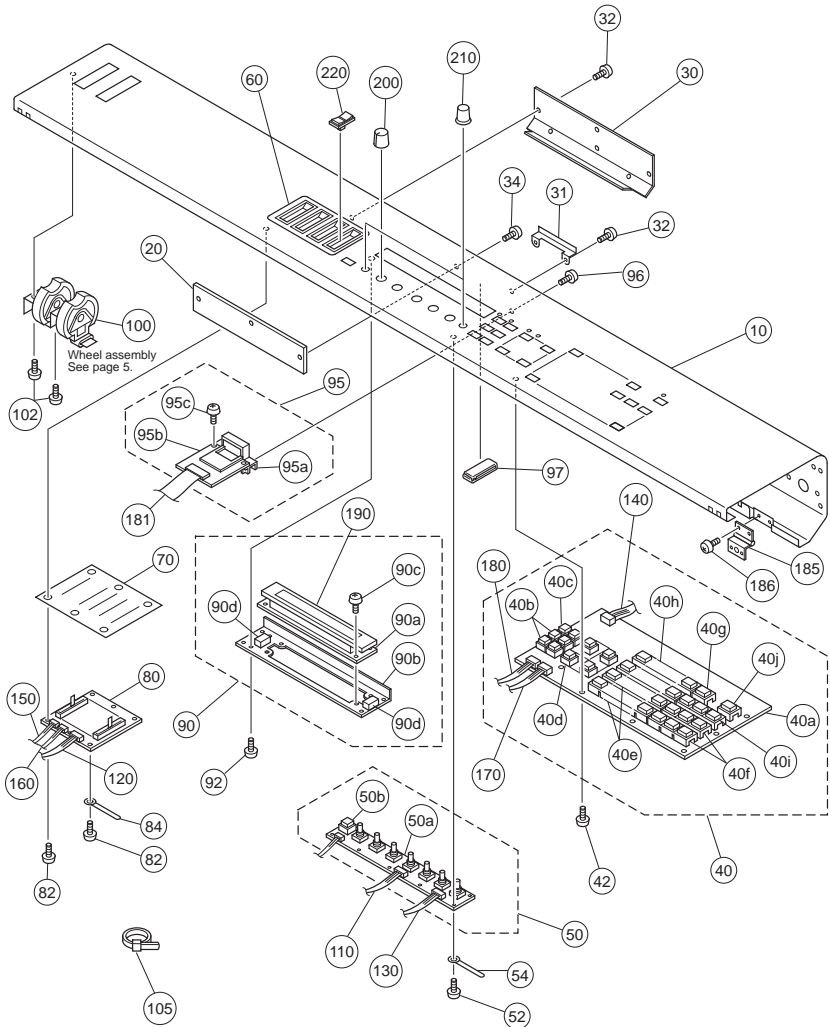


CONTROL PANEL ASSEMBLY



REF NO.	PART NO.	DESCRIPTION	REMARKS	QTY	RANK
	--	CONTROL PANEL ASSEMBLY	S80		
	--	Control Panel Assembly	(V419070)		
* 10	V4165700	Control Panel			
20	--	Cover (B)	(V419540)		
30	--	PLG Cover	(V416590)		
31	--	AS Angle, Bracket	K-AA		
32	EP630210	Bind Head Tapping Screw-S	3.0X6 MFZN2BL	2	01
33	V4810700	Coin Screw	3.0X6	3	
34	VS863000	Flat Head Screw	3.0X6 MFZN2BL	3	01
40	--	Circuit Board Assembly	PN		
			(V419120)		
* 40a	V3576600	Circuit Board	PN		
40b	V4162900	Push Button	M2G	2	
40c	V4162700	Push Button	M2B		
40d	V4162600	Push Button	M1B	9	
			EXIT-ENTER,DEC/NO-INC/YES		
			EF BYPASS-MASTER KEYBOARD		
			VOICE,PERFORM,STORE,		
			UTILITY,CARD,SEQ,PLAY,		
			EDIT,JOB,PLAY/STOP		
40e	VY864900	Switch Knob	L5B	3	03
			PRE 1-PRE2-INT-EXT-PLG1,		
			1-5,9-13		
40f	VY865000	Switch Knob	L3B	2	03
40g	VY865200	Switch Knob	L1B		03
40h	VY864300	Switch Knob	L5G		03
40i	V4195300	Switch Knob	L3G		03
40j	VY864700	Switch Knob	L1G		03
42	EP600230	Bind Head Tapping Screw-B	3.0X6 MFZN2BL	12	01
45	VP064300	Cord Holder	LWS-IS		03
50	--	Circuit Board Assembly	RV		
			(V419130)		
* 50a	V3576700	Circuit Board	RV		
50b	V4162800	Push Button	M1G		
52	EP600230	Bind Head Tapping Screw-B	3.0X6 MFZN2BL	10	01
54	CB829850	Cord Binder	S-34Z	2	03
			SHIFT		
60	V3890600	Escutcheon, SVR			
70	--	Dust Proof Cloth			
			(V406290)		
* 80	V3576900	Circuit Board	SV		
82	EP600230	Bind Head Tapping Screw-B	3.0X6 MFZN2BL	6	01
84	CB829850	Cord Binder	S-34Z	3	03
90	--	Display Assembly			
			(V418580)		
* 90a	V4195900	LCD Assembly			
90b	--	LCD Support Angle			
			(V388390)		
90c	EP600230	Bind Head Tapping Screw-B	3.0X6 MFZN2BL	3	01
90d	--	LCD Spacer			
			(V419800)		
91	--	Shield Bracket	0.8		
			(V480610)		
92	EP600230	Bind Head Tapping Screw-B	3.0X6 MFZN2BL	4	01
95	--	Smart Media Assembly			
			(V409770)		
* 95a	V3882500	SM Escutcheon	K-CB		
95b	V3577200	Circuit Board	SM		
95c	EP600190	Bind Head Tapping Screw-B	3.0X8 MFZN2BL	2	01
96	EP600190	Bind Head Tapping Screw-B	3.0X8 MFZN2BL	2	01
97	--	Flat Cable Clamp	LFC-30N		
			(V439780)		
100	--	Wheel Assembly			
			(V419140)		
102	EP600230	Bind Head Tapping Screw-B	3.0X6 MFZN2BL	4	01
105	CB069250	Cord Holder	BK-1	3	01
110	--	Connector Assembly	10P-650 KRD-KRD		
			(VK11700)		
120	--	Connector Assembly	6P-400 KRD-KRD		
			(VK10960)		
130	--	Connector Assembly	8P-450 KRD-KRD		
			(VK11110)		
140	--	Connector Assembly	7P-700 KRD-KRD		
			(VK11820)		
150	--	Connector Assembly	4P 450L(S) DM-MVR		
			(V434180)		
160	--	Connector Assembly	5P 650L(S) JK-MVR		
			(V481400)		
170	--	Connector Assembly	5P-800 KRD-KRD		
			(VK12100)		
180	--	Connector Assembly	3P-300 KRD-KRD		
			(VK10530)		
181	--	FFC Cable Assembly	P=1.0-L=26-430		
			(V381380)		
* 185	V3891000	Hinge	1.6 1 MFZN2-Y	3	
186	EP640410	Bind Head Tapping Screw-B	4.0X8 MFZN2Y	6	01
190	--	LCD Cover			
			(V406210)		
* 200	V3887700	Knob		5	
			ASSIGNABLE KNOB		
210	V3887900	Knob	ENCODER	2	
			PAGE,DATA		
220	VM780300	Knob		5	03
			VOLUME,CONTROL SLIDER		

\*: New Parts

RANK: Japan only